

TECHNICAL DATASHEET

Date: 19/05/2021

Article Code: S0004

Description: R043X067 H110 - ml 250 DIN 24 CENTRALE LATO CORTO OLIO
 Shape: RECTANGULAR CAN

Diameter/Side (mm): 043 mm x 067 mm (Nominal)

Height(H): 110 mm

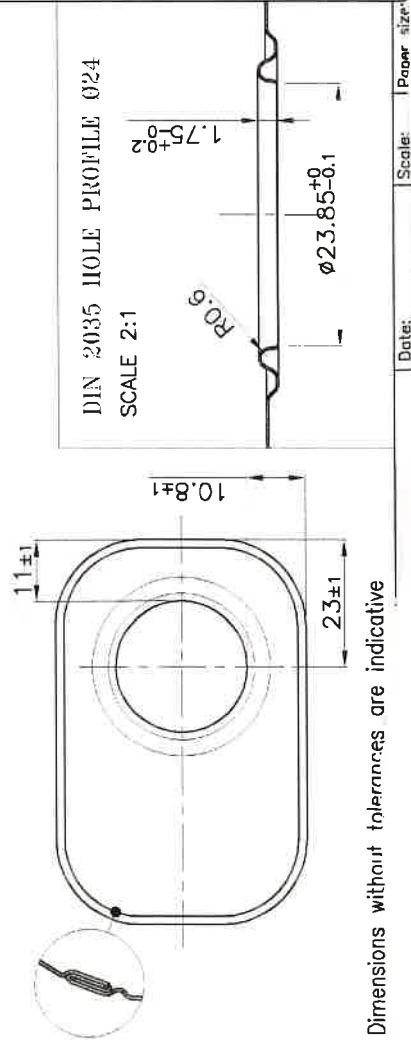
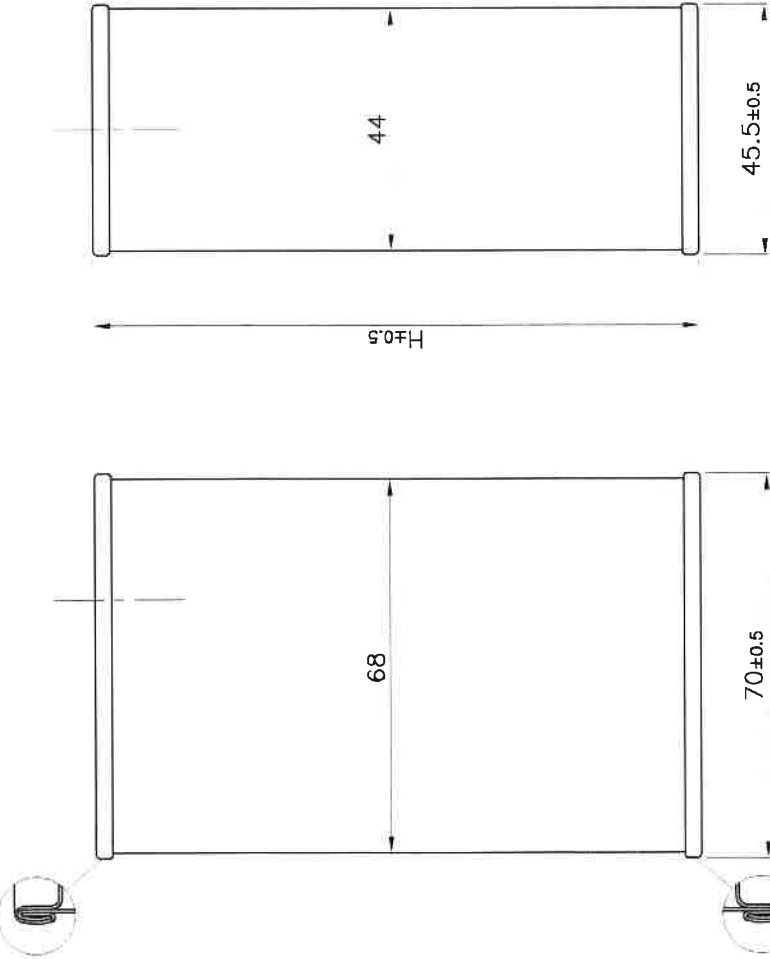
Body Type: Side Seamed

Hole side: HOLE OPPOSITE WELDING SIDE

Weight (gr): 52,6

Drawing: GA084367001_Scatola_43x67_DIN24

Material	Thickness	Temper	Tin
Body	0,20	TS290 (T59 BA)	5,6 - 1,4 (Int-Est)
Bottom end	0,22	TS290 (T59 BA)	5,6 - 1,4 (Int-Est)
Lid	0,22	TS290 (T59 BA)	5,6 - 1,4 (Int-Est)



Dimensions without tolerances are indicative

Date: _____ Scale: _____ Paper size: _____

BILL OF MATERIAL

E0001	FONDO R043X067 OLIO	PZ	1,0
E0002	COP R043X067 DIN 24 CENTRALE LATO CORTO OLIO	PZ	1,0
F0004	CORPI R043X067 H110 - ml 250	PZ	1,0
AMAS280001	Thermoplastic Sealant VD-02LV ST_Rev_04_30/07/13 SS_Rev_05_	GR	0,2

Inside: Plain or with suitable protecting coating
 Outside: Plain, lacquered or printed as per customer need
 Tolerances: According to EN10202:2004